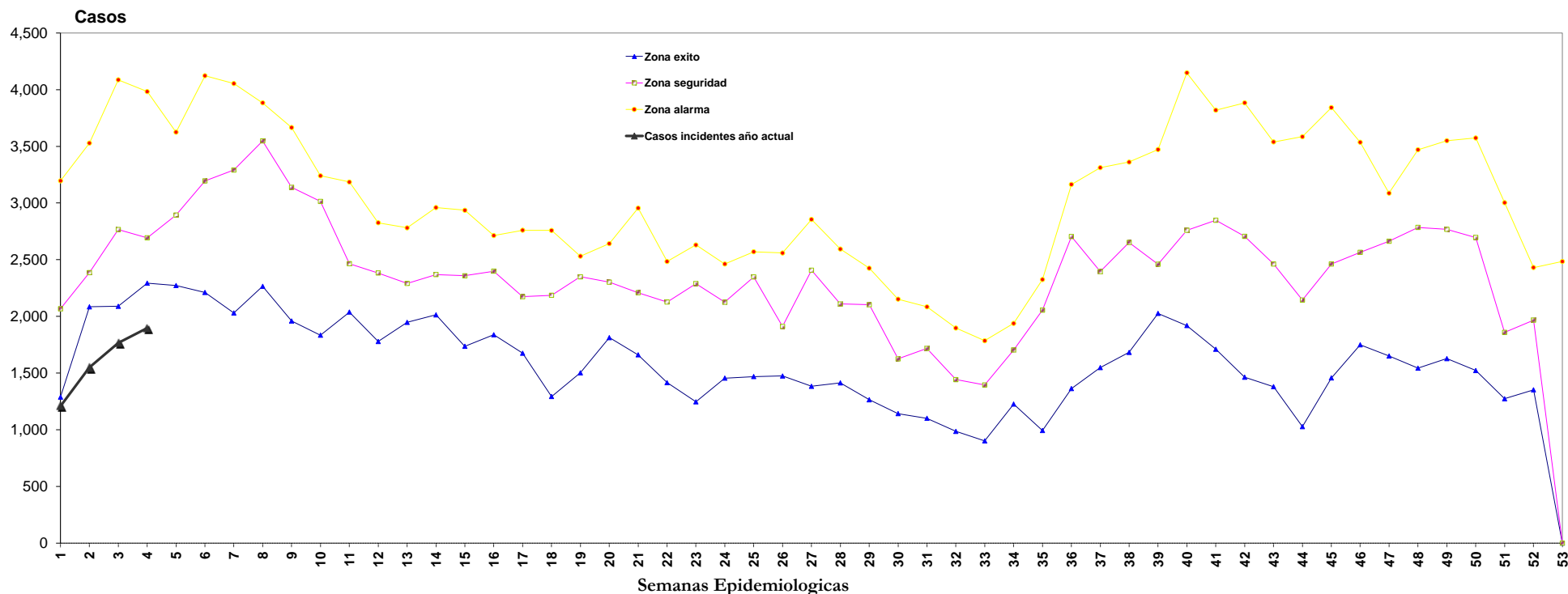


**CANAL ENDEMICO ESTATAL DE: IRAS EN MENORES DE 5 AÑOS 2020**

SEMANAS EPIDEMIOLÓGICAS DE LOS AÑOS 2013																																																																																																																																																																																																																																																																																																																																																																																																																																																																																																																																																																																																					
Semanas Epidemiológicas																																																																																																																																																																																																																																																																																																																																																																																																																																																																																																																																																																																																					
AÑOS	1	2	3	4	5	6	7	8	9	10	11	12	13	14	15	16	17	18	19	20	21	22	23	24	25	26	27	28	29	30	31	32	33	34	35	36	37	38	39	40	41	42	43	44	45	46	47	48	49	50	51	52	53	TOTAL																																																																																																																																																																																																																																																																																																																																																																																																																																																																																																																																															
2013	2,127	2,815	3,272	3,338	3,167	3,213	3,291	3,548	3,138	3,225	2873	2491	2122	2491	2358	2713	2760	2492	2531	2627	2209	2174	2337	2462	2570	2559	2855	2594	2410	2152	2084	1897	1785	1938	2325	2963	3312	3361	3472	4149	3,819	3,635	2,994	2,816	2,787	2,703	2,663	2,813	3,074	2,791	2,425	2,151	0	142,87																																																																																																																																																																																																																																																																																																																																																																																																																																																																																																																																															
2014	2,067	2,621	2,766	3,306	3,155	3,311	3,491	3,668	3,275	3,240	3185	2826	2781	2960	2936	2399	2521	2186	2361	2642	2955	2484	2630	2415	2555	1911	2407	2565	2359	2145	1919	1781	1706	1767	2241	2704	2925	2959	3113	3289	3,688	3,884	3,539	3,585	3,842	3,536	3,087	3,470	3,550	3,574	3,003	2,431	2,484	150,20																																																																																																																																																																																																																																																																																																																																																																																																																																																																																																																																															
2015	3,196	3,529	4,087	3,983	3,625	4,123	3,892	3,555	3,596	3,014	2768	2717	2291	2679	2522	2475	2174	2406	2439	2302	2211	2318	2529	2263	2348	2353	2658	2540	2425	2150	1978	1815	1749	1704	2139	2819	2479	2910	2858	3396	3,237	3,154	2,718	2,632	2,913	2,806	2,856	3,069	3,158	2,696	2,066	1,967	0	142,28																																																																																																																																																																																																																																																																																																																																																																																																																																																																																																																																															
2016	2,166	2,166	2,809	2,421	2,894	3,195	4,054	3,884	3,666	3,027	2465	1778	2311	2292	2421	2684	2535	2758	2349	2395	2263	2127	2289	2125	2366	2291	2457	2109	2103	1441	1717	1442	1395	1930	1991	2645	2321	2652	2460	2760	2,848	2,706	2,462	2,144	2,462	2,565	2,885	2,785	2,768	2,743	1,859	2,312	0	127,29																																																																																																																																																																																																																																																																																																																																																																																																																																																																																																																																															
2017	1,864	2,267	2,089	2,693	2,438	2,372	2,363	2,545	2,599	2,612	2465	2383	2331	2369	1736	2076	1780	1755	1816	2101	2014	1788	1796	1990	1977	2188	1890	1842	1628	1622	1625	1226	1318	1360	1687	2055	3164	2395	1999	2397	1919	1,710	1,463	1,380	1,027	1,457	1,840	1,779	1,987	1,627	1,522	1,273	1,366	0	101,17																																																																																																																																																																																																																																																																																																																																																																																																																																																																																																																																														
2018	1,596	2,084	2,576	2,643	2,491	2,310	2,447	2,459	2,229	2,293	2310	2103	1947	2069	1853	2040	1923	1803	1776	2046	2094	2049	1771	1547	1657	1751	2019	1957	1889	1508	1224	1259	1070	1226	1357	1792	1784	1959	2078	2182	2,079	1,717	2,055	1,544	1,904	1,749	1,813	1,828	1,856	1,760	1,672	1,556	0	98,87																																																																																																																																																																																																																																																																																																																																																																																																																																																																																																																																															
2019	1,288	2,386	2,253	2,293	2,272	2,211	2,400	2,265	1,959	1,834	2038	1993	2099	2019	1709	1838	1675	1293	1502	1812	1661	1415	1246	1474	1383	1414	1284	1102	1121	1085	901	894	993	1363	1548	1682	2026	2040	2,102	2,090	2,194	1,932	2,007	1,940	1,850	1,543	1,697	1,615	1,359	0	89,26																																																																																																																																																																																																																																																																																																																																																																																																																																																																																																																																																		
TOTAL	14,304	17,868	19,852	20,677	20,042	20,735	21,568	21,924	20,462	19,245	18,104	16,291	15,882	16,873	15,905	16,225	15,368	14,693	14,774	15,925	15,411	14,363	14,792	14,244	15,153	14,229	15,621	14,804	14,074	12,613	11,249	10,947	9,966	11,746	13,281	17,450	16,764	17,522	18,404	19,735	19,483	18,649	17,342	15,680	17,412	17,139	16,733	17,495	17,730	16,701	13,837	13,135	2,484	852,00																																																																																																																																																																																																																																																																																																																																																																																																																																																																																																																																															
Q1	1,288	2,084	2,089	2,293	2,272	2,211	2,030	2,265	1,959	1,834	2,038	1,778	1,947	2,013	1,736	1,838	1,675	1,293	1,502	1,812	1,661	1,415	1,246	1,455	1,469	1,474	1,383	1,413	1,284	1,142	1,101	965	901	1,226	993	1,363	1,548	1,682	2,026	1,919	1,710	1,463	1,380	1,027	1,457	1,749	1,650	1,543	1,627	1,522	1,273	1,352	0	89,26																																																																																																																																																																																																																																																																																																																																																																																																																																																																																																																																															
Ma	2,067	2,386	2,766	2,693	2,894	3,195	3,291	3,548	3,138	3,014	2,465	2,383	2,291	2,369	2,358	2,399	2,174	2,186	2,349	2,302	2,209	2,127	2,289	2,125	2,348	1,911	2,407	2,109	2,103	1,625	1,717	1,442	1,395	1,704	2,055	2,704	2,395	2,652	2,460	2,760	2,848	2,706	2,462	2,144	2,462	2,565	2,663	2,785	2,768	2,696	1,859	1,967	0	127,29																																																																																																																																																																																																																																																																																																																																																																																																																																																																																																																																															
Q3	3,196	3,529	4,087	3,983	3,625	4,123	4,054	3,884	3,666	3,240	3,185	2,826	2,781	2,960	2,936	2,713	2,760	2,758	2,531	2,642	2,955	2,484	2,630	2,462	2,570	2,559	2,855	2,594	2,425	2,152	2,084	1,897	1,785	1,938	2,325	3,164	3,312	3,361	3,472	4,149	3,819	3,884	3,539	3,585	3,842	3,536	3,087	3,470	3,550	3,574	3,003	2,431	2,484	150,20	20,00																																																																																																																																																																																																																																																																																																																																																																																																																																																																																																																																														
2020	1,209	1,550	1,766	1,897																																																																																																																																																																																																																																																																																																																																																																																																																																																																																																																																																																																																	

### Canal Endémico Estatal de: Iras en Menores de 5 años



**FUENTE: SUIVE-1-2005; SUIVE-1-2007**

PROCESO DE INFORMACION: DEPARTAMENTO DE EPIDEMIOLOGIA